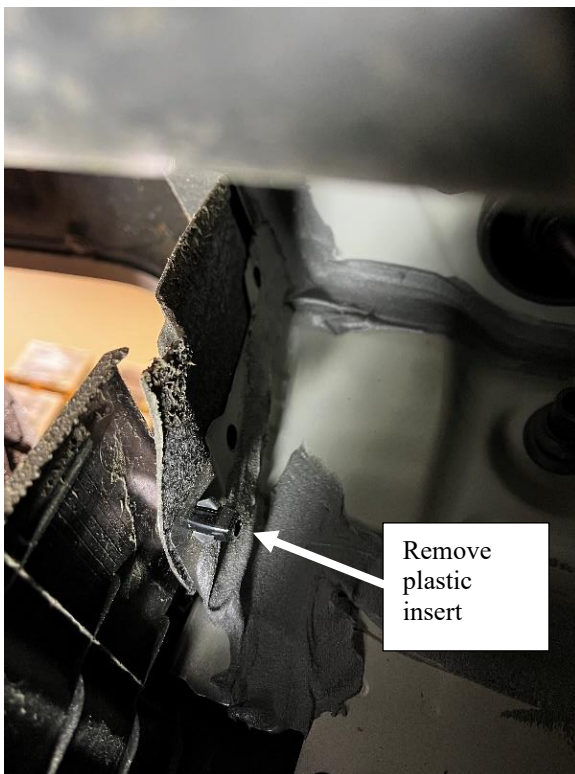
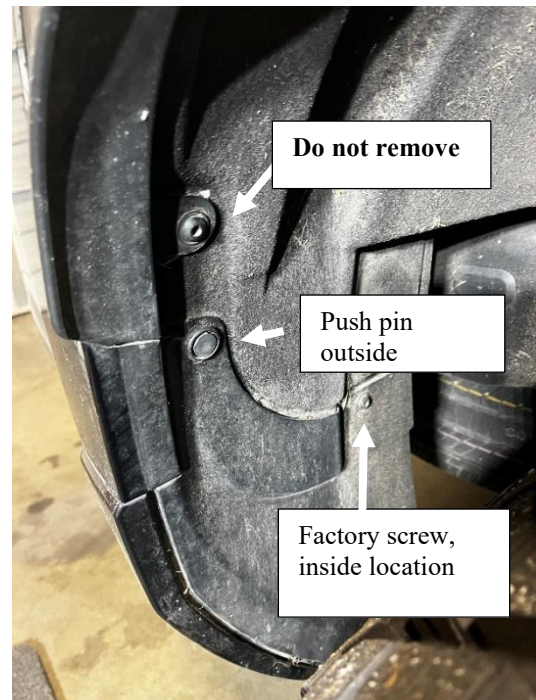


Included Parts:

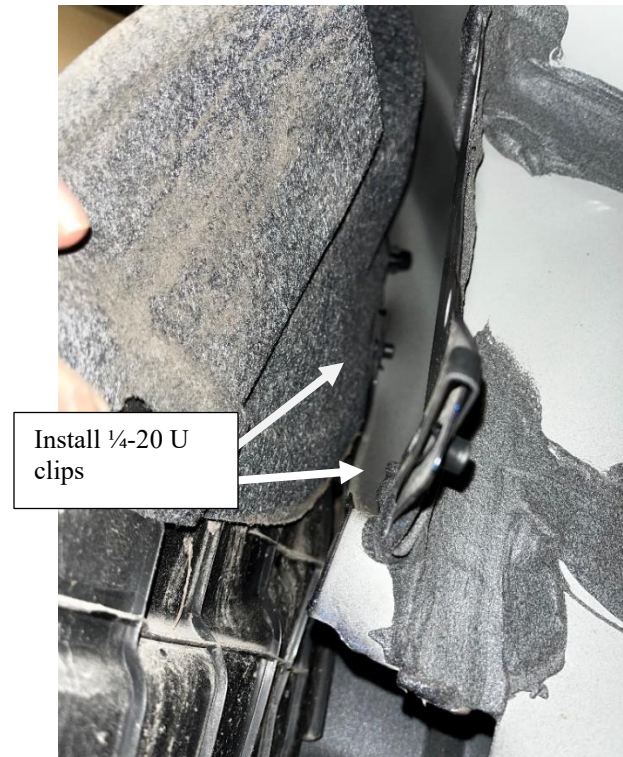
- (4) 1/4-20 x 1" (SSBO) bolts
- (4) 1/4" (SSBO) washers
- (4) 1/4-20 U clips
- **(2) 10071 Lexus GX 550 rear stud brackets (pre-installed on the flaps)**

Installation Steps:

1. PARK VEHICLE ON LEVEL WORK AREA.
2. Unpack and verify all parts are included per list above. ***If anything is missing, please call DuraFlap at the number below.***
3. Remove inside factory screw and the plastic push pin.
4. Remove the plastic insert. (use side cutters to cut and remove the nut-certs from the back side)



5. Install ¼-20 U-clips in two locations.
  - a. Pull wheel well liner away from body to access the upper hole location where the push pin was removed.



6. Position the mud flap in the fender well.
  - a. Use the ¼-20 bolt with a washer to secure the flap at the inside location, leaving slightly loose.
  - b. Push on the stud bracket to ensure it slides between the plastic flare and the liner as you rotate the flap into place.
  - c. Use ¼-20 bolt with a washer to secure the flap to the outside location. Leave slightly loose.
7. Ensure the flap is plumb to the tire and the bracket is between the flare and the liner and tighten all the nuts and bolts.



**NOTE: Check bolts and screws for tightness every three months.**

**If you have any questions, give us a call. (541) 245-9148**