

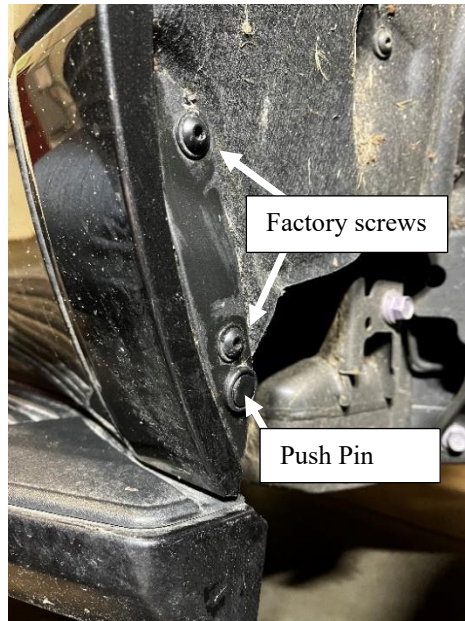
Lexus GX 550, 2024-current Set-back bracket and flap Installation FRONT

Included Parts:

- (12) 1/4-20 x 1" (SSBO) bolts
- (18) 1/4" (SSBO) washers
- (6) 1/4-20 SSBO nyloc nuts
- (4) 1/4-20 U-clips
- (2) 1/4-20 Flange nuts
- **(2) 10073 Lexus twist brackets**
- **(2) 10072 Lexus set back brackets**
- (2) Rectangle mud flaps

Installation Steps:

1. PARK VEHICLE ON LEVEL WORK AREA.
2. Unpack and verify all parts are included per list above. ***If anything is missing, please call DuraFlap at the number below.***
3. Remove the two factory screws and the plastic push pin.

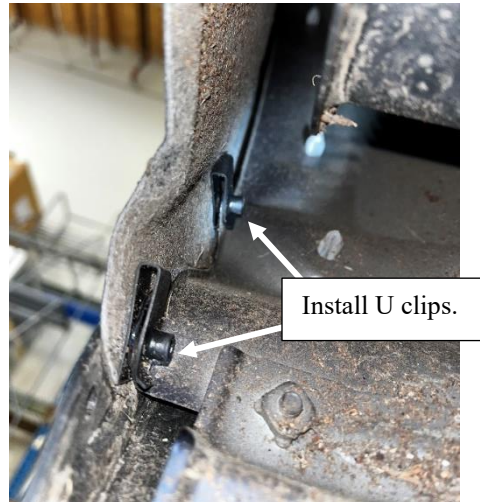


4. Remove the plastic inserts. (use side cutters to cut and remove the nut-certs from the back side)



Lexus GX 550, 2024-current
Set-back bracket and flap Installation
FRONT

5. Install the 1/4-20 U-clips on the metal fender.



6. Position the bracket lining up the holes in the bracket with the 2 factory holes with new U clips.
- a. Use the 1/4-20 bolts with washers to secure the bracket to the fender / U clips. Leave slightly loose.
 - b. Adjust the bracket to be plumb to the tire and tighten the two bolts.
7. Mount the mud flap onto the bracket with grooves toward the tire.
- a. Install bolts into the two outside holes, use 1/4-20 bolts with washers on both sides, secure with nyloc nuts.
8. Install the aluminum twist bracket to the inside hole of the stainless-steel bracket. Use 1/4-20 bolt with washers on both sides. Leave loose.
- a. Aline the twist bracket under the door panel and mark the location to drill.
 - b. Slide bracket out of the way and drill the mounting hole using 5/16" drill.
 - c. Use 1/4-20 bolt with a washer and Flange nut (no washer between flange nut and bracket) to secure the small aluminum bracket to the drilled location.



NOTE: Check bolts and screws for tightness every three months.

If you have any questions, give us a call. (541) 245-9148