



## Pre-drilled installation 2019 - current GMC 1500 Single Rear Wheel Mud Flaps

**Hardware:** 6- #8 x 1 1/4"-stainless steel black oxide (SSBO) screws; 8- #10 (SSBO) washers ;  
2- #8 x 7/8 SSBO screws; 2- (SS) Flat Clips with U clips #10016

*Thread locker is recommended for all screws*

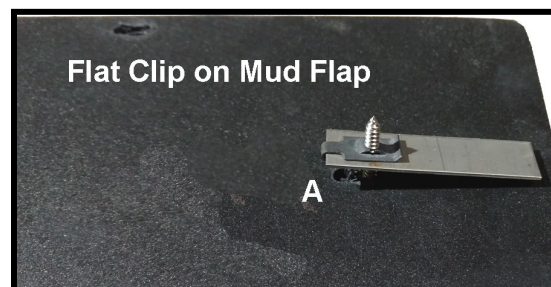
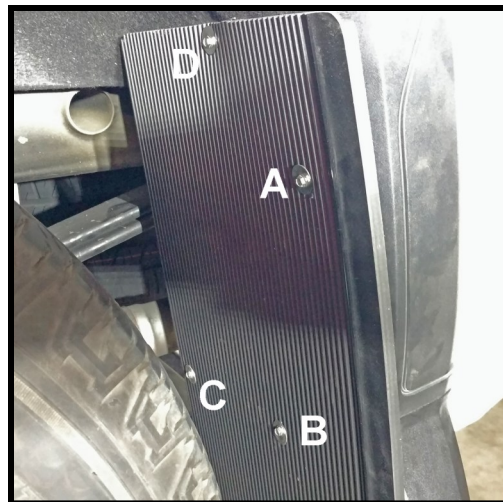
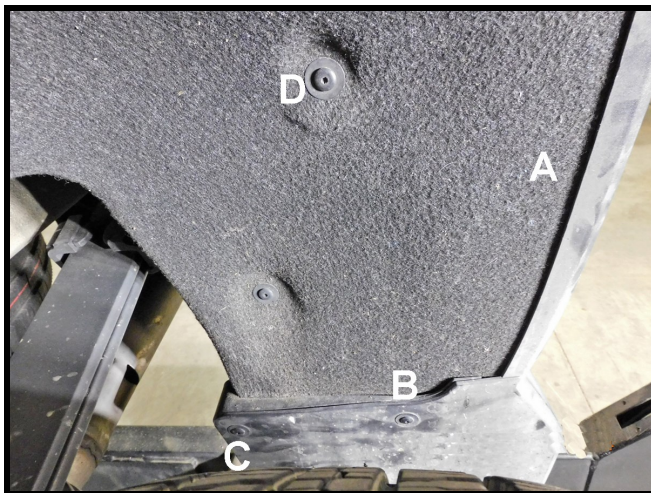
**NOTE:** *As you progress with the install, check for alignment of the mud flap to the tire.*

- Step 1: Un package your new rear mud flaps. Smooth side is rear side, tapered corner on top is outside top edge. If applicable, Stainless Steel weights face towards the rear of the vehicle.
- Step 2: Remove factory screws at point B, C and D, Be careful not to break the u-clips behind the splash guard. You will need a T15 hex head bit.
- Step 3: Align the mud flap to point B and attach with the longer 1 1/4" screw thru a washer, the mud flap, the splash guard and into the factory u-clip behind it.
- Step 4: Slide the flat clip between the flare and the liner, then rotate the mud flap into an upright position to determine where the flat clip needs to line up with Hole A. Secure it with a short 7/8" screw and washer.
- Step 5: Attach the mud flap at point D with a 1 1/4" screw, going thru a washer, the mud flap and into the u-clip behind the liner.
- Step 6: Repeat step #5 at point C.
- Step 7: Check alignment and tighten all screws.

**NOTE:** **Recheck every three months and retighten bolts if necessary.**

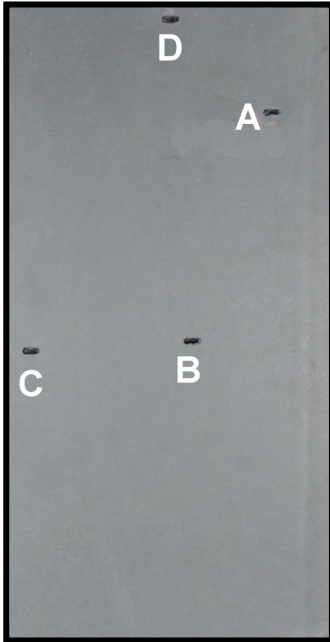
Add moisture to your mud flaps at least twice a year using furniture polish or vinyl or leather treatment.

If you have any questions, problems or concerns please phone us at (541) 245-9148

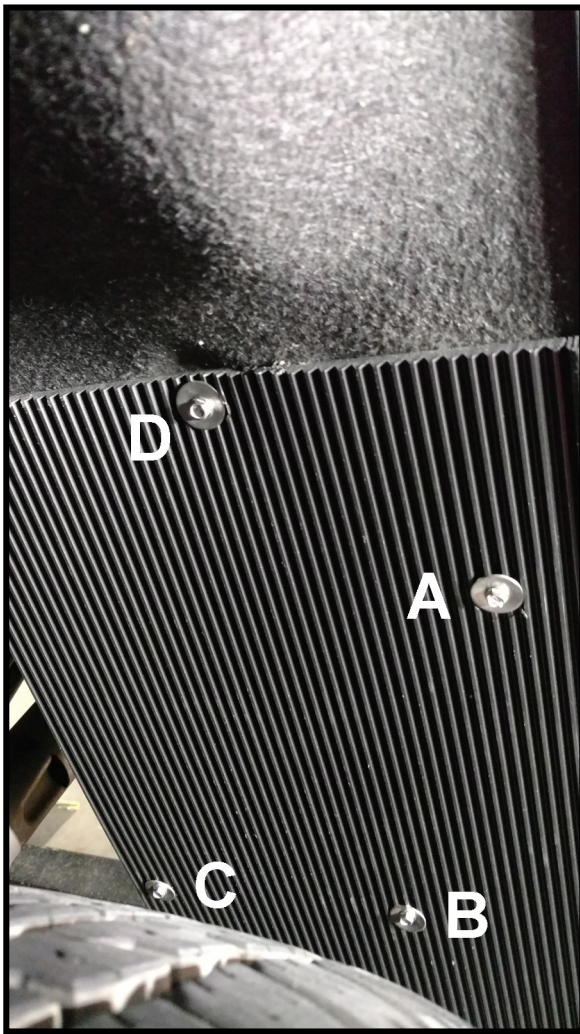


GR12 19 1500, GR14 19 1500

2- (SS) Flat Clips with U clips #10016



12" on narrow splashguard



14" on narrow splashguard



14" on wider splashguard

