



Directions For Dodge Rear 2019 — Current 1500 With only a Partial Rear Liner Drill-less Installation

Supplied Hardware:

2- Stainless Steel Black Oxide (SSBO) 1/4-20 x 1ö Bolts; 4- 1/4ö SSBO washers; 2- SS Nylok Nuts;
2- "S" brackets

NOTE: *Read all the instructions below before starting this installation.*

As you progress with this install, check that the mud flap remains square and plumb to the tire.

Step 1: Unpack your new mud flaps. Rain grooved side faces the tire and tapered corner is the outside top edge. If applicable, Stainless Steel weights will face to the rear.

Step 2: Remove your factory splash guards or the screws that are in the factory holes located at points (A), (B), and (C). **Save them to reinstall your new mud flaps.**

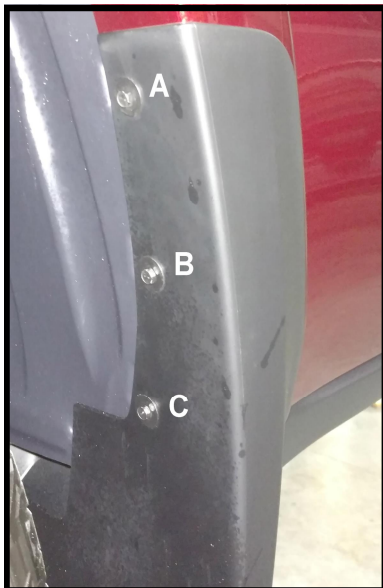
Note: Some of the splash guards will have double sided tape holding the guard to the flair, carefully separate the splash guard from the fender or flare. Clean the flares or fender well before installing new mud flaps.

Step 3: Place the mud flap in the fender well. Align the flap into place by matching the holes in the mud flap to the factory holes at points A,B, and C. Reinstall the factory screws finger tight at this time.

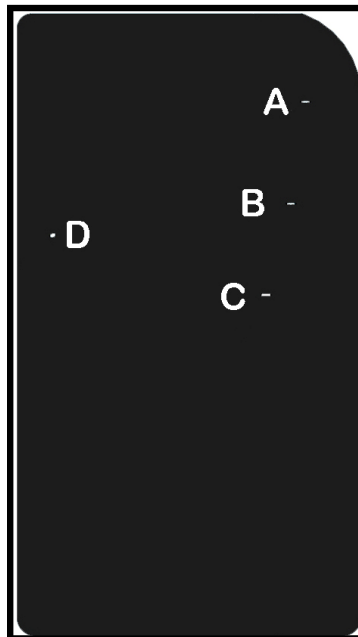
Step 4: Align the flap to be straight and centered to the tire, and tighten the screws.

Step 5: Install the supplied öSö bracket. Hook it over the fold on the back of the plastic fender well liner at point D as seen on the picture below. Use the 1/4 x 20 x 1ö bolt, through the washer, through the grooved side of the mud flap, through the öSö bracket, then another washer and secure it with the supplied nylok nut.

NOTE: Recheck every three months and tighten if necessary.



Step 2



Step 3



Step 5