



DURAFLAP INSTALL DIRECTIONS FOR FORD F-150 FRONT 2015 to 2020, with Flares

Supplied Hardware: 6- #8 x 7/8 Stainless Steel Black Oxide (SSBO) screws; 6- #10 small inner diameter (SSBO) Washers; 2- 1/4 x 20 x 1 1/4" (SSBO) bolts; 2- 1/4" (SSBO) washers; 2- (SS) Flange Nuts; 2- (SS) 6mm Nylok Nuts; 2- 1/4" (SS) large inner diameter washers; **2- Aluminum (AL) Flat Clips #10001;**
2- 15 F150 Front AL Brackets #10053.

Make sure you are parked on level ground. As you progress, verify that the mud flaps are hanging straight and centered to your tires with the tires turned straight.

Step 1: Attach the black anodized u-clips on the F150 bracket over the holes at points A,B &C if they are not already on the bracket. Hole D in the bracket is **NOT** used for this application. The U-Clips are attached with the threaded side to the back (the bottom of the bracket is bent to the back side)

Note: See picture on the back, Put a slight bend in the bracket to match the shape of the fender well.

Step 2: Place the F150 bracket between the fender well liner and the metal fender well lip. It is a tight space and will need to have pressure applied by hand to get it in place. The bottom of the bracket tucks behind the plastic (cap) reinforcement piece at the bottom of the fender well lip.

Step 3: Attach the bracket by slipping it over the factory bolt at point F under the door panel, and securing it with the supplied SS washer and SS 6MM nylok nut as shown on the back of this page.

Note: You can bend the mud flap to match the curve of the fender well for the next step.

Step 4: Place the mud flap with the smooth side to the rear and the textured side toward the tire, inside the fender well and start the first SSBO #8 x 7/8 screw thru the SSBO #10 washer and into the hole in the mud flap at point A then through the top u-clip on the bracket. Finger tighten only.

Step 5: Insert the remaining screws and washers thru the mud flap and into the u-clips on the F150 bracket at points B and C. Finger tighten only.

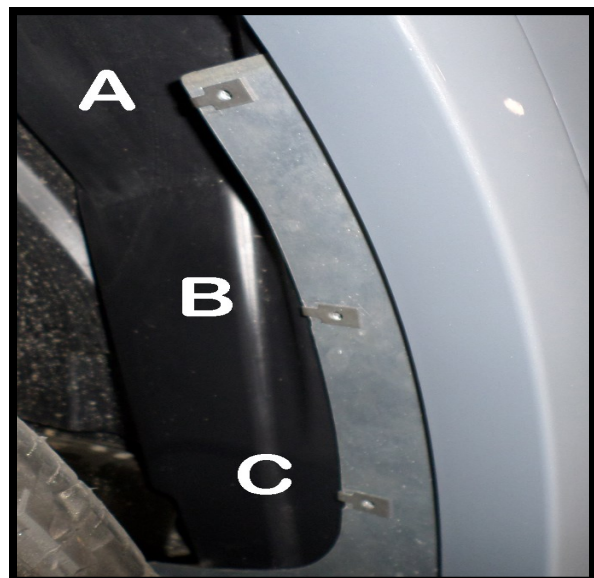
Step 6: At point E, insert the 1/4-20 x 1 1/4 bolt thru a 1/4" (SSBO) washer, thru the (grooved side) of the mud flap, thru the hole in the bracket. Then slip the AL flat clip over the bolt with the bend toward the mud flap. Slide the longer end of the flat clip over the square tubular frame opening and secure it with the supplied SS flange nut. Finger tighten only. See picture on the back.

Step 7: Align the mud flap to be plumb vertically and tighten all screws and bolts.

Note: Recheck bolts every three months and retighten as necessary.

Add moisture to the mud flap every 6 months. You can use furniture polish, vinyl treatment or leather treatment for this.

IF YOU HAVE ANY QUESTIONS OR CONCERNS PLEASE GIVE US A CALL AT 541-245-9148

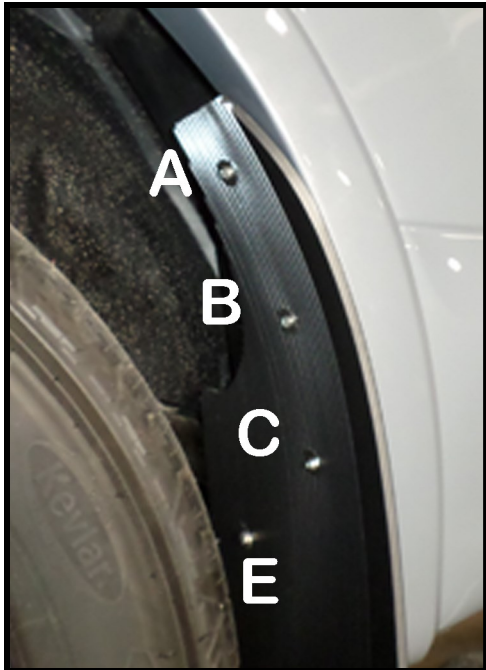
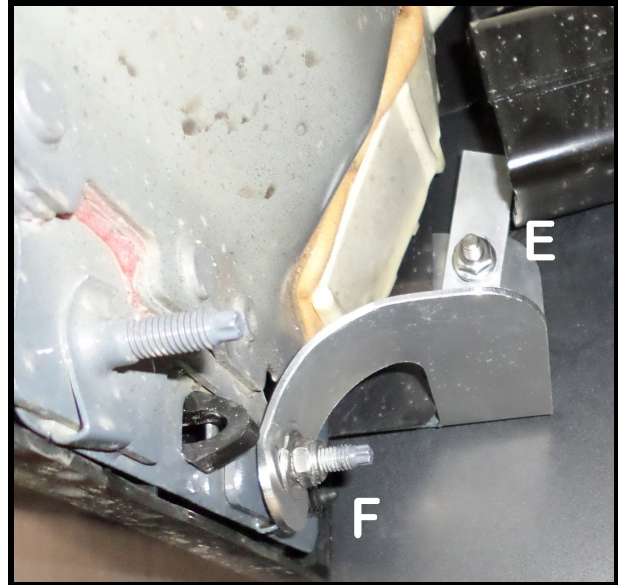


FF12 15 150 WF, FF12L 15 150 WF,

2- Aluminum (AL) Flat Clips #10001;

2- 15 F150 Front AL Brackets #10053

Put a slight bend in the bracket to match the shape of the fender well



FF12 15 150 WF, FF12L 15 150 WF,

2- Aluminum (AL) Flat Clips #10001;

2- 15 F150 Front AL Brackets #10053