



## DURAFLAP INSTALL DIRECTIONS FOR FORD REAR DRILLESS MUDFLAPS 2015 to 2020, F-150 no Flares

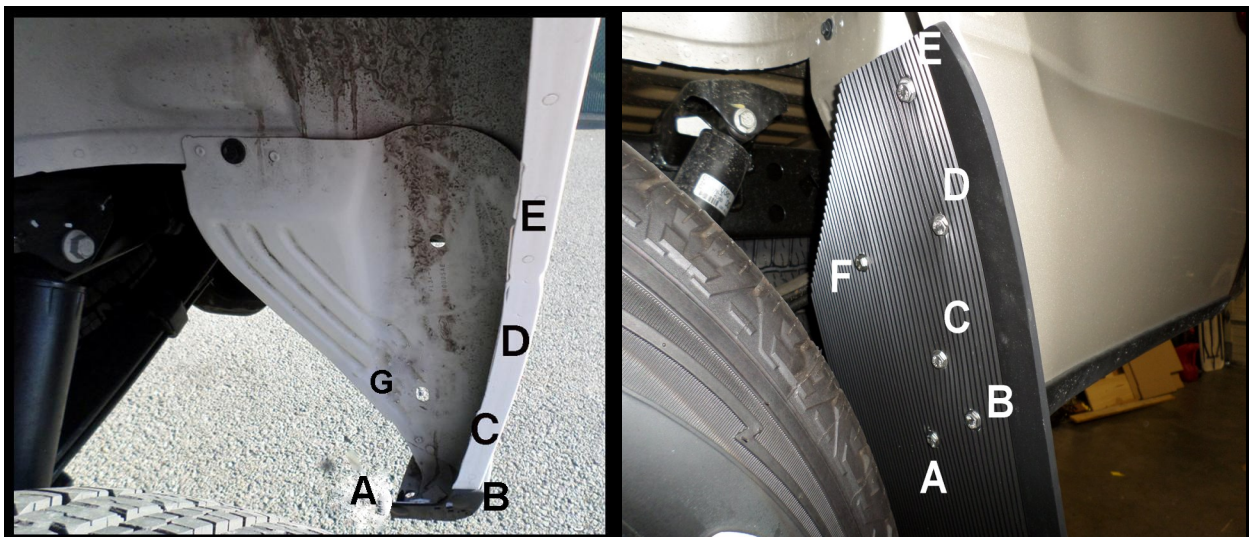
Supplied hardware: 6- 1/4-20x1 1/4" Stainless-steel Black Oxide (SSBO) hex bolts; 8- 1/4- 20x1" (SSBO) hex bolts; 14- 1/4" SSBO washers; 14- SS flange nuts; 6- Aluminum Washers; 2- 1" diameter washers;  
**6- flat clips #10001; 2- Aluminum F-150 15 Z brackets #10020**

**NOTE:** *As you progress with this install, make sure the flap is square and plumb to the tire.*

- Step 1: Unpack your new rear mud flaps. Smooth side is rear side and groove side faces the tire.  
If applicable, Stainless Steel weights face rearwards.
- Step 2: Attach the flat clips to the back (smooth side) of the mud flap at points **C, D and E**. (See picture on back). Slide the (SSBO) 1/4-20 x 1 1/4" hex bolt thru the (SSBO) washer, thru the Grooved side of the mud flap, thru the flat clip with the bent edge toward the smooth side of the mud flap and secure it with the (SS) flange nut. Leave flange nuts loose for now. (See picture on back)
- Step 3: Remove factory plastic push pins located at points **A and B**.
- Step 4: Install one end of the AL"Z" bracket at Point **G** by inserting the supplied 1" bolt through a washer, through the Z-bracket then through the factory hole at point **G**, Use an Aluminum washer and secure it with a supplied Flange Nut. Leave this just a little bit loose for now.
- Note:** We have included 1" diameter washers if needed for hole **G**.
- Step 5: Place the mud flap into the fender well and match up the pre drilled hole in the flap at point **B** with the factory hole in the truck fender well lip. Insert a 1/4-20 x 1" bolt thru a washer, then the flap, and secure it with an AL washer and flange nut. Repeat this step for point **A**. Leave them slightly loose.
- Step 6: Slip the bent end of the "FLAT CLIPS" over the edges of the fender well lip at points **C, D and E**, and tighten causing the clip to grip the sheet metal firmly. (See picture on back)
- Note:** **If you have an aftermarket liner you will have to punch a hole through the liner to reach the Z bracket. If you have a liner make sure to align the flap and tighten all other bolts before you punch the hole and finish attaching the flap to the Z bracket.**
- Step 7: Attach the other end of the "Z" bracket to the mud flap at the pre-drilled hole at point **F** with one 1/4-20 x 1" bolt, washer and flange nut.
- Step 8: Check the alignment of the mud flap to make sure the flap is square and plumb to the tire and tighten up all the bolts.

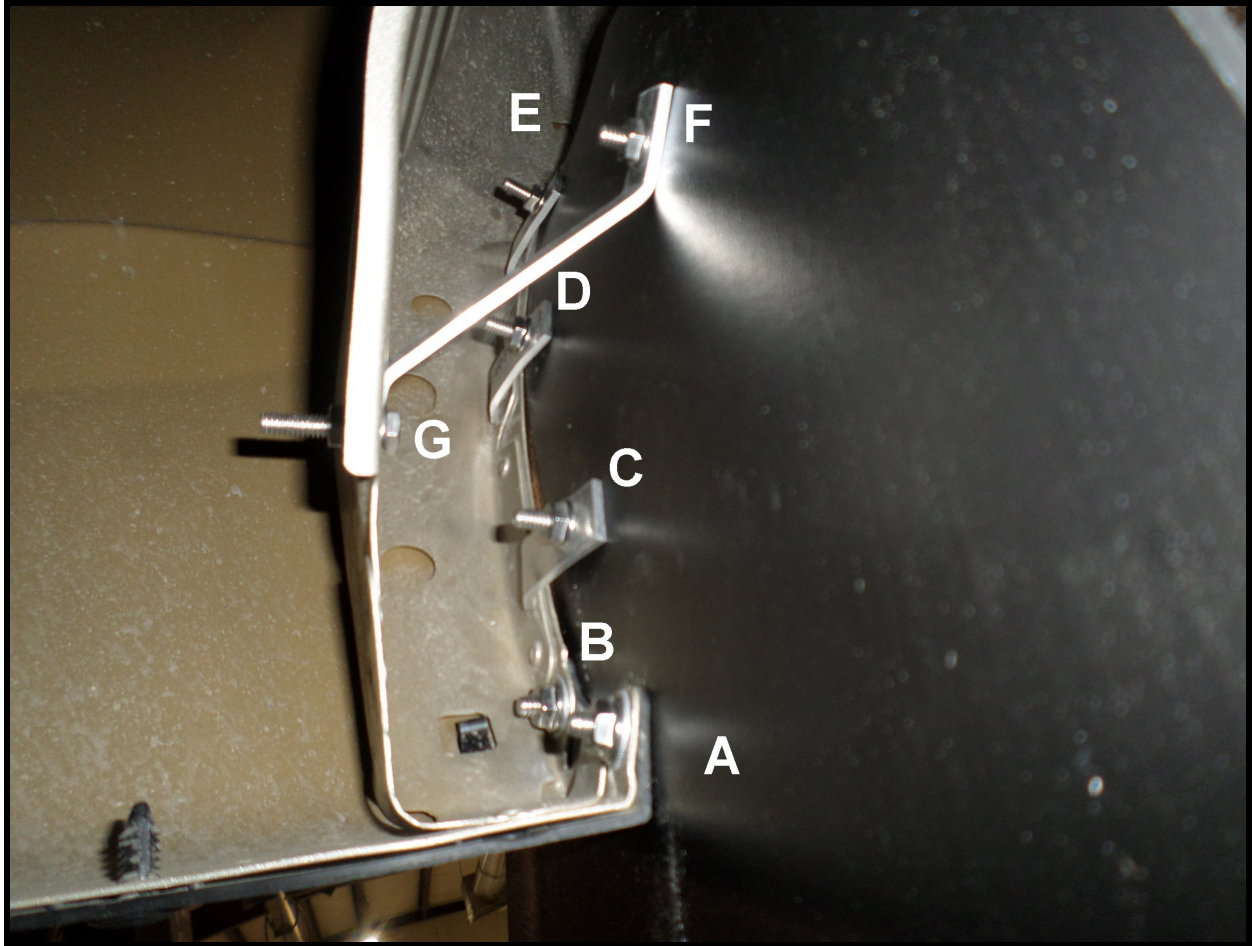
**NOTE:** Recheck every three months and retighten bolts if necessary.

If you have any questions, please give us a call at (541) 245-9148.



FR12 15 150 NF, FR12L 15 150 NF, FR14 15 150 NF, FR14L 15 150 NF

**6- flat clips #10001; 2- Aluminum F-150 15 Z brackets #10020**



FR12 15 150 NF, FR12L 15 150 NF, FR14 15 150 NF, FR14L 15 150 NF  
6- flat clips #10001; 2- Aluminum F-150 15 Z brackets #10020