



Chevy/GMC Colorado and Canyon 2015 - 2022 Front Install Directions

*Included hardware: 2- (#8) x 1.25" screws stainless-steel black oxide (SSBO); 2- (#8) x 1.5" SSBO screws; 4- (#10) washers; 2 - 1/4 x 20 x 1" SSBO bolts; 2 - 1/4" SSBO washers; 2 - (SS) Flange Nuts ; 2 - small u-clips just in case; **2- Flat Clips #10001; 2-rounded plastic spacers #10051***

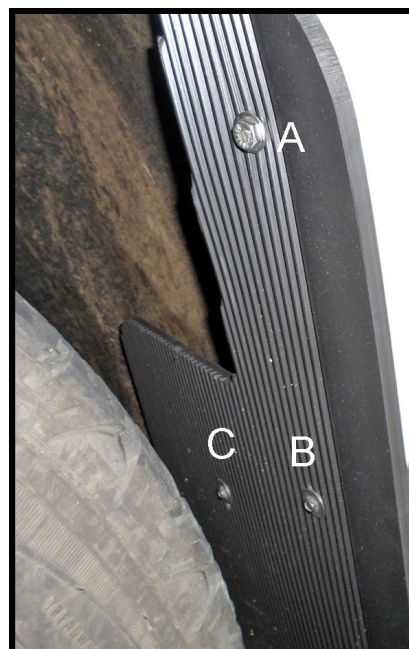
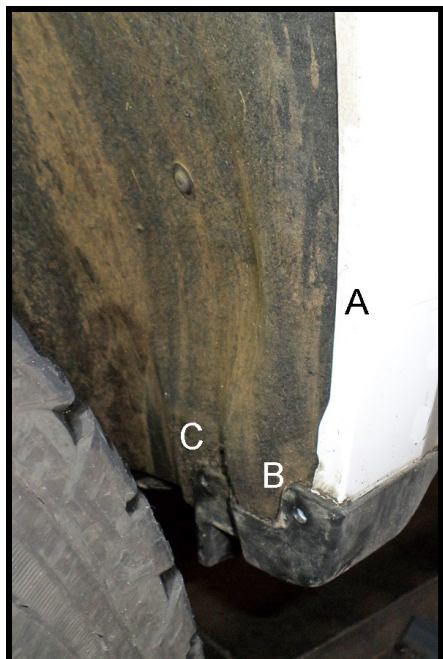
Thread locker is recommended on all non-nylok fasteners

NOTE: Park on level surface for installation. As you progress with the install, check that the mud flap remains square and plumb to the tire.

- Step 1:** Remove mud flaps from package. Smooth side faces rear, tapered corner on top is outside top edge. If applicable, Stainless Steel weights face rear.
- Step 2:** Attach the flat clip to the back (smooth) side of the mud flap at Point A. Slide the (1/4x20x1) hex bolt through the (1/4") washer, through the tire side of the mud flap (side with grooves), through the flat clip with the bent edge toward the mud flap, and secure it with the (SS) flange nut.
- Step 3:** Remove the factory screws at points B and C, being careful not to break the u-clip behind the liner.
- Step 4:** Align the pre-drilled hole in the mud flap with factory hole B and thread the (#8)x 1.25 screw and (#10) washer through the mud flap and into the factory hole and u-clip. Leave slightly loose.
- Step 5:** Slip the bent end of the "FLAT CLIP" over the edge of the fender well lip, and tighten causing the clip to grip the fender firmly at Pont A.
- Step 6:** Thread the (#8) x 1.5" screw and with (#10) washer through the mud flap, the plastic spacer and into the u-clip at point C. Leave slightly loose.
- Step 7:** Check alignment and tighten all screws and bolts.

**Note: Re-check every three months and retighten if necessary.
Add moisture to the mud flaps 2 times a year. Use furniture polish or vinyl treatment.**

IF YOU HAVE ANY QUESTIONS OR CONCERNS PLEASE GIVE US A CALL AT 541-245-9148



CCF 12 15; CCF 14 15

2- Flat Clips #10001; 2-rounded plastic spacers #10051

