



Directions for pre-drilled installation of Ford Rear 2011-2016 F250/350 Single Rear Wheel with Flare package

Included Supplies: 2- 1/4-20 x 1" Stainless Steel Black Oxide (SSBO) bolts ; 2- 1/4" (SSBO) washers; 2- (SS) flange nuts; 4- #8 x 1.25 (SSBO) screws; 4- small anodized u-clips; 4- #10 (SSBO) washers;

2- (2011 FRB Brackets) Ford Rear Brackets #10003.

Thread locker should be used on all screws and bolts

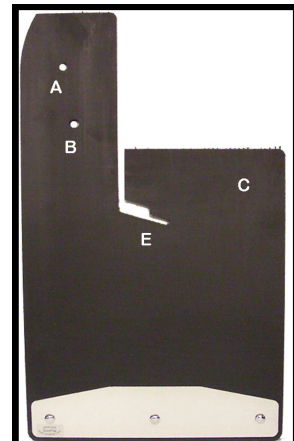
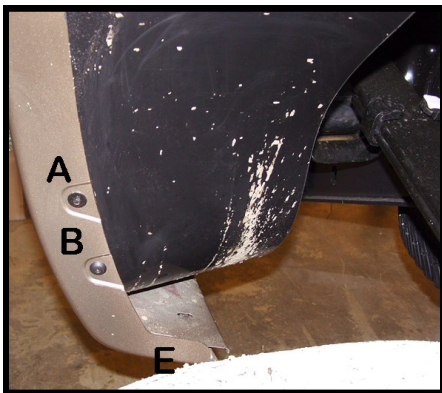
NOTE: *You are going to have to drill one hole in the mud flap to fit it up to your truck.*

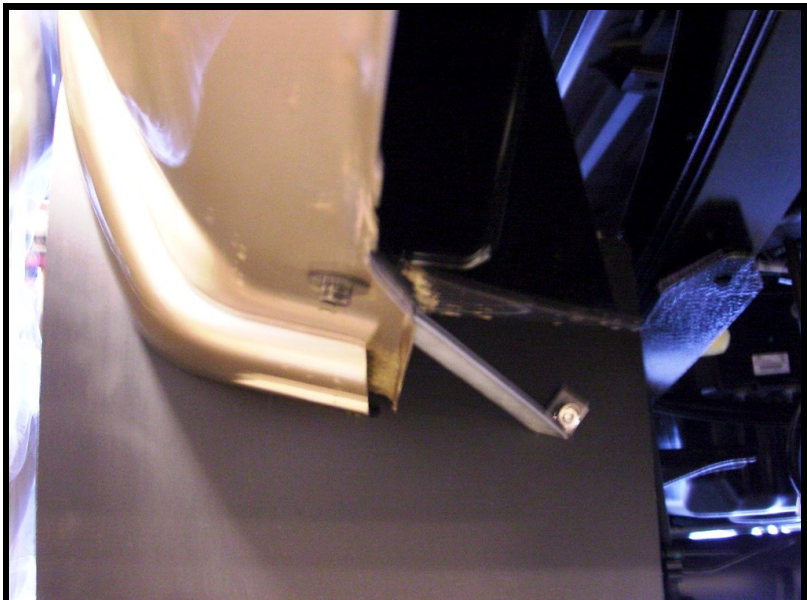
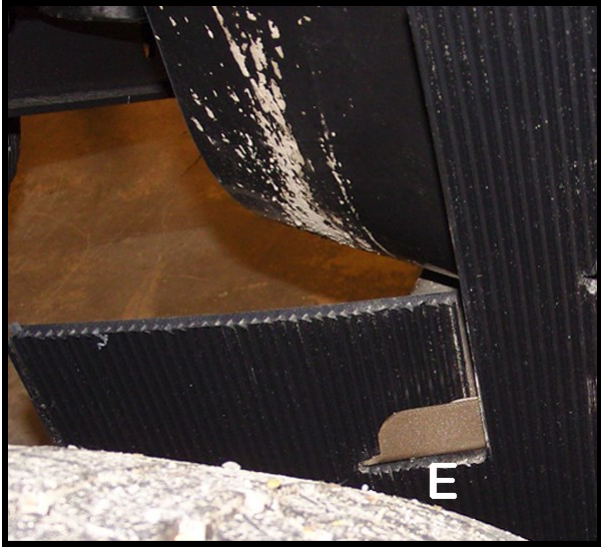
- Step 1: Un package your new rear mud flaps. Smooth side is rear side, tapered corner on top is outside top edge. If applicable, Stainless Steel weights face rearwards.
- Step 2: Remove the factory plastic push pin and the hex screw at points "A and B", if applicable.
- Step 3: Slide the U-clip over the factory hole at point B onto the metal fender well lip behind the flare.
- NOTE:** If the factory u-clip at point A gets damaged, replace it with the supplied u-clip placed over the factory hole in the fender well liner.
- Step 4: Place the mud flap inside the fender well slip the cut out of the mud flap around the fender well lip at point E as shown in the photos. This is necessary to allow the mud flap to hang in line with the tire.
- Step 5: Place the first #8 screw and washer, through hole B in the mud flap, the factory hole and into the u-clip. Leave slightly loose for now.
- Step 6: Repeat step 5 for hole "A".
- Step 7: Check for mud flap alignment and adjust as needed.
- Step 8: Tighten the screws.
- Step 9: Attach the Ford 2011 Rear Bracket (FRB), to the strut bracket bolt at (point D) by removing the factory nut and bolt (located on the lower rear rocker panel behind fender well). Place the straight end of the bracket under the plastic liner and secure the bracket, liner and strut with the factory bolt and nut. The bent end of the bracket should point up where it attaches to the mud flap. Choose a hole in the bracket that will keep the mud flap square to the tire. See picture for correct placement.
- Step 10: Position the FRB against the rear side of mud flap. Position it to keep the mud flap aligned to the tires (point C) and drill a 1/4" hole through the mud flap using the bracket as a template. You may find that the end of the bracket needs additional bending or straightening to sit flat against the mud flap.
- Step 11: Attach the mud flap to the bracket with the 1/4-20 bolt and washer, through the mud flap then the bracket and secure with a flange nut.

NOTE: Recheck every three months and tighten bolts if necessary.

Add moisture to the mud flap twice a year with furniture polish or vinyl/leather treatment.

IF YOU HAVE ANY QUESTIONS OR CONCERNS PLEASE GIVE US A CALL AT 541-245-9148





FR12 11 WF, FR12L 11 WF, FR14 11 WF, FR14L 11 WF 2--(2011 FRB Brackets) Ford Rear Brackets #10003