



## Directions for drill-less installation of Ford Rear 2008—2010 with flares

Included Supplies: 8- 1/4-20 x 1 1/4" Stainless Steel Black Oxide (SSBO) bolts; 8- 1/4" (SSBO) washers; 2- (SS) Flange Nuts; 6- U clips installed on brackets.

**2- 08 Ford Aluminum (AL) Brackets #10021; 2- twist brackets #10008.**

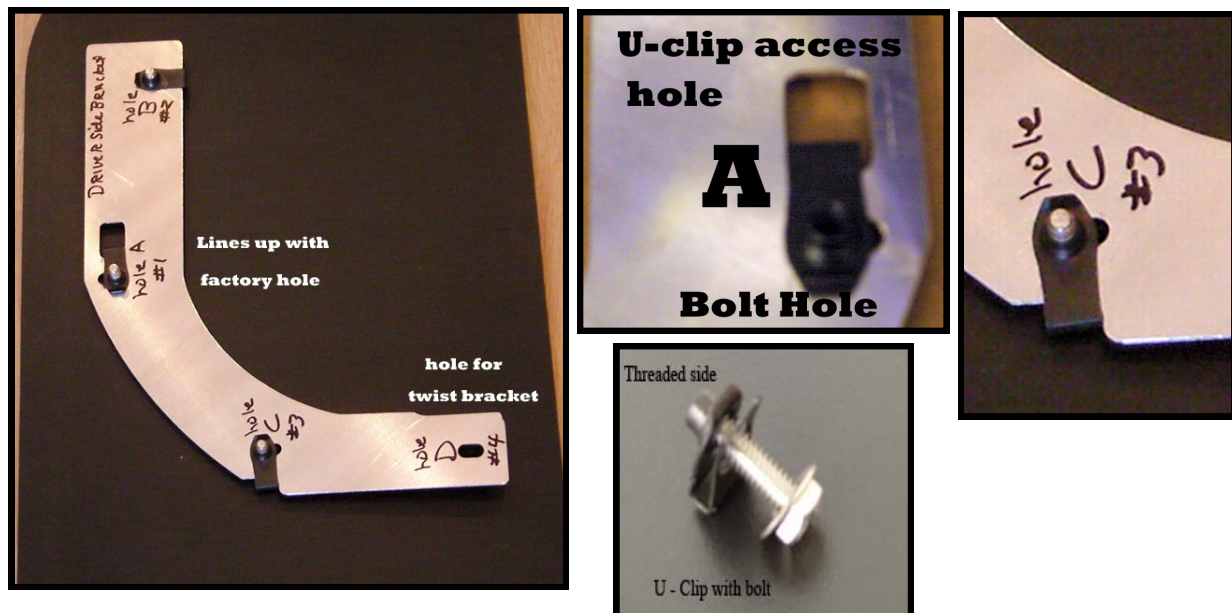
*Thread locker is recommended on all screws and bolts*

- Step 1: Unpack your new rear mud flaps. Smooth side is rear side, tapered corner on top is outside top edge. If applicable, Stainless Steel weights face rearwards.
- Step 2: If not already done. Slide the U-clips over the holes on the flat bracket with the threaded side on the labeled side of the bracket at points A, B and C. The u-clip for hole A is attached through the access hole in the bracket as shown.
- Step 3: Attach the flat bracket to the (smooth side) of the mud flap at points B and C leaving the bolts loose. Thread the 1/4-20 bolts through washers, grooved side of the mud flap and into the u-clips in the bracket. If the bracket comes attached to the mud flap, remove the bolt at hole A.
- Step 4: Place the mud flap into the fender well slipping the flat bracket behind the fender well lip, match up hole A in the flap with the factory hole in the fender well. Secure with 1/4-20 bolt and washer. Leave loose for now.
- Step 5: Secure points B and C using 1/4-20 bolts with washers causing the flat bracket to grip the sheet metal of the fender well lip. (leave the bolts slightly loose for now)
- Step 6: Remove the fender strut bracket bolt. See Pictures on the back.
- Step 7: Attach the straight end of the twist bracket, to the strut bolt, using the existing factory bolt. You will want to check and determine which hole is going to leave you with the correct length for your Application.
- Step 8: Attach the other end of the twist bracket to the mud flap at hole D. Use a 1/4-20 bolt with washer and secure with a flange nut. You may need to bend the twist bracket a bit more or less to have it lay flat against the mud flap to insure the mud flap is hanging parallel to the tire.
- Step 9: Check alignment and adjust as needed.
- Step 10: Tighten all bolts.

**NOTE: Recheck every three months and retighten bolts if necessary.**

**Add moisture to the mud flaps twice a year with furniture polish, vinyl treatment or leather treatment.**

IF YOU HAVE ANY QUESTIONS OR CONCERNS PLEASE GIVE US A CALL AT 541-245-9148



FR12 08 WF, FR14 08 WF, **2- 08 Ford Aluminum (AL) Brackets #10021; 2- twist brackets #10008.**



Shows how the bracket will slip behind the fender well lip. Then thread the SS Bolt thru the washer, mudflap, hole A, and then the u-clip on the bracket.

