



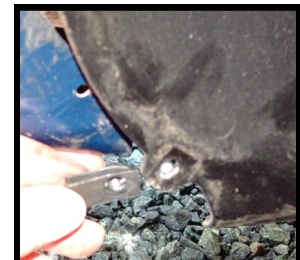
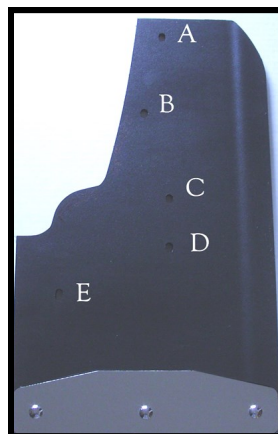
## DURAFLAP INSTALL DIRECTIONS FOR FORD F-450 FRONT DRILLESS MUDFLAPS 2008—2010

Included supplies: 4- Small anodized U-Clips; 4- #10x 1 1/4 Stainless Steel Black Oxide (SSBO) Screws; 4- #10 (SSBO) washers; 4- 1/4-20x1" (SSBO) bolts; 8- 1/4" (SSBO) washers; 4- 1/4-20x1 1/4" (SSBO) bolts; 4- (SS) flange nuts; **2- "L" Brackets #10012; 2- "T" Brackets #10027**

- Step 1: Remove factory plastic push pins located at "C and D" if necessary.
- Step 2: Remove the factory screws at points "A and B".
- Step 3: Install the supplied "U-Clips" over the factory holes in the liner with the threaded side to the rear and the smooth side forward at points "A and B" if none exist.
- Step 4: Place the mud flap with the smooth side to the rear and the textured side to the front, inside the fender well and start the #10 screw thru a washer and into the top hole "A" of the mud flap, and into the u-clip. finger tighten only.
- Step 5: Repeat step 4 for hole, "B".
- Step 6: Attach the long end of the L Bracket under the lower quarter panel at point "F" with the 1/4-20 x 1" bolt, washer and nut. Leave only finger tight.
- Step 7: Attach the mud flap to the bracket at point "E" with the 1/4-20 x 1" bolt, washer and flange nut. Leave only finger tight.
- Step 8: Insert the T-Bracket behind fender well at points C and D, secure with the 1/4-20 x 1 1/4" bolts with washers. Leave loose for now.
- Step 9: Align the mud flap to be plumb vertically and tighten all screws and bolts.

**Note:** Recheck bolts and screws every three months and retighten as necessary.  
Add moisture to your mud flaps twice a year using furniture polish or vinyl treatment.

IF YOU HAVE ANY QUESTIONS OR CONCERNS PLEASE GIVE US A CALL AT 541-582-6699



FF12 08 450, FF12L 08 450, FF14 08 450, FF14L 08 450

**2- "L" Brackets #10012; 2- "T" Brackets #10027**

