



## Drill-less installation Instructions for 2007–2019 Chevy / GMC 1500/2500-3500 Single Rear Wheel

**Hardware:** 2- 1/4-20x1.25” Stainless steel Black Oxide (SSBO) bolts; 2-SS Flange nuts; 4- (SSBO) 1/4x1” washers; .

**2- Aluminum flat brackets that include; 10- 1/4 20 u-clips; 10- 1/4-20x1.125 (SSBO) bolts; 10 1/4x1” (SSBO) Washers, pre installed on the flaps**

**NOTE:** As you progress with the install, check for alignment of the mud flap to the tire.  
We suggest using thread locker on bolts and screws

Step 1: Smooth side is rear side, grooved side towards the tire.

**Note:** If you have aftermarket fender flares you may need to trim the flare to allow the bracket to slide into place.

Step 2: \*If you have a fender well liner, you will need to punch a hole through the liner to access attachment point F; this attachment point cannot be overlooked. You can find the factory hole from the back as shown in the image on the back.

Step 3: Slip the edge of the bracket behind the fender well lip. Check alignment and tighten bolts, leaving them slightly loose. When the bolts are later tightened, they will cause the bracket to grip the fender well lip.

**Note:** On the 2014-18 1500 and 2015-19 2500/3500 Chevy trucks, you will need to finesse the bracket over the 2 factory screws holding the trim ring on the bottom of the fender well at points G and H. There are cut outs in the bracket to line up with these screws at points G and H.

Step 4: Attach the mud flap at point F. Use 1/4-20 bolts, washers, and flange nuts. Leaving it slightly loose.

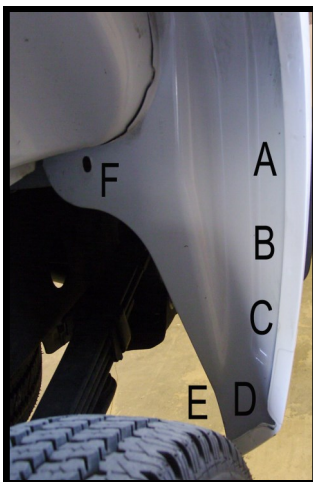
**Note:** You will have to reach up into the fender well to secure the flange nut with a 7/16 wrench.

Step 5: Check alignment, tighten the bracket and then point F.

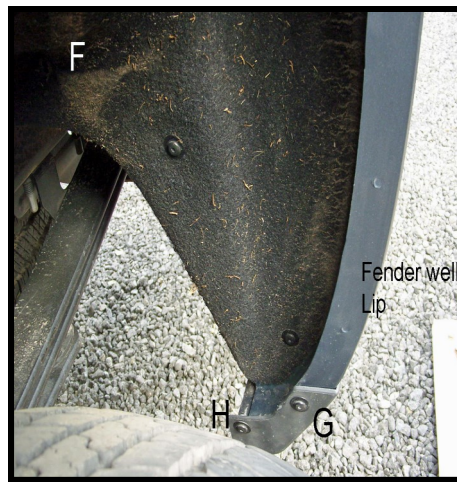
**Note:** Recheck every three months and retighten bolts if necessary.

Add moisture to your mud flaps twice a year using furniture polish, vinyl treatment or leather treatment.

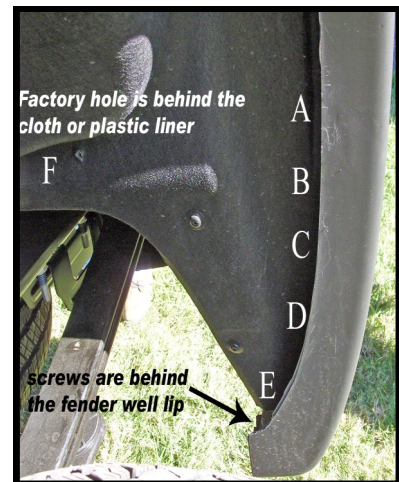
IF YOU HAVE ANY QUESTIONS OR CONCERNS PLEASE GIVE US A CALL AT 541-245-9148



2007-2013/4 Chevrolet or GMC Without Liner and Without flare

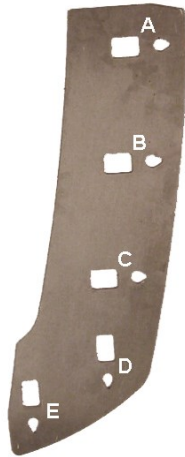
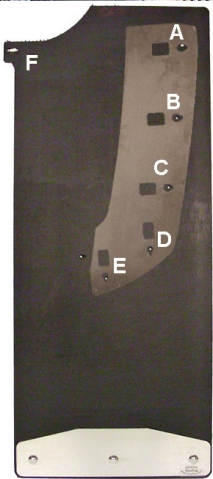
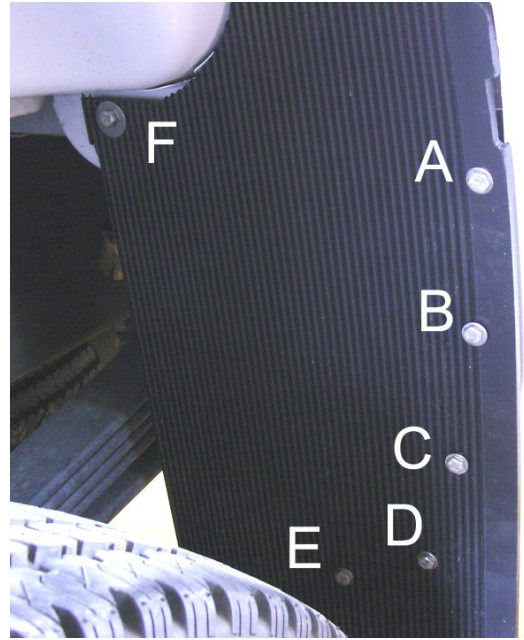
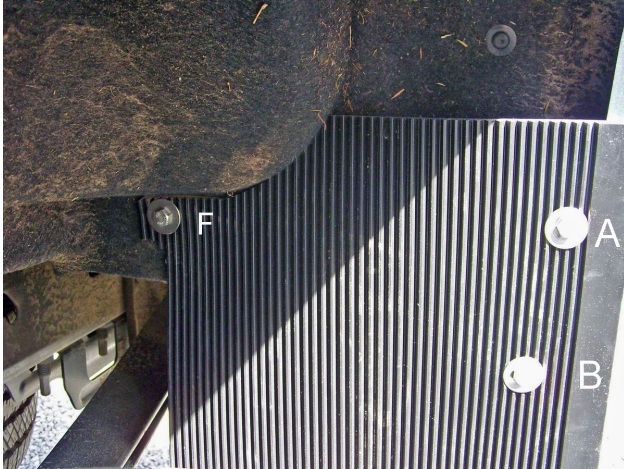


2014-2018 Chevrolet 1500; 2015-2019 2500/3500 With Cloth Liner and without flare



2014-2018 GMC 1500; 2015-2019 2500/3500 With Plastic Liner and with flare

CR12 07/15, GR12 07/15, 1500s also. **2- Aluminum flat brackets that include; 10- 1/4 20 u-clips; 10- 1/4-20x1.125 (SSBO) bolts; 10- 1/4x1” (SSBO) Washers, pre installed on the flaps**



2007-2013 1500 / 2015 2500/35005 brackets



Drivers  
Passenger  
2014-2018 1500 and 2015-2019 2500/3500 brackets



Hole in back of fender well liner,

CR12 07/15, GR12 07/15, 1500s also. **2- Aluminum flat brackets that include; 10- 1/4 20 u-clips; 10- 1/4-20x1.125 (SSBO) bolts; 10- 1/4x1" (SSBO) Washers, pre installed on the flaps**