



FORD EXPEDITION 2007-2017 INSTALL DIRECTIONS FOR REAR DRILL-LESS MUDFLAPS

Included hardware: 2- 1/4-20 x 1 1/4 Stainless Steel Black Oxide (SSBO) bolts; 2- (SS) flange nuts; 2- 1/4" (SSBO) washers; 4-(SSBO) #8 x 1.5" long screws; 4- #10 (SSBO) washers; 4-small U clips; 2- flat clips;

- Step 1:** Remove mud flaps from package. Smooth side faces rear. If applicable, Stainless Steel Weights face to the rear.
- Step 2:** Remove factory screws or bolts from fender well lip at (Points A and B). We have provided new u-clips if needed.
- Step 3:** Attach the flat clip to the back (smooth) side of the mud flap. Use a 1/4-20 bolt with a washer, go through (textured side) of the mud flap, through the flat clip with the bent edge toward the mud flap, and secure it with a flange nut. Leave loose for now.
- Step 4:** Place the mud flap inside the fender well. Start the #8 screw through the mud flap and into the U-clip at hole "A", finger tighten only.

NOTE: We have included longer screws to use in case you find the factory screws are not long enough.

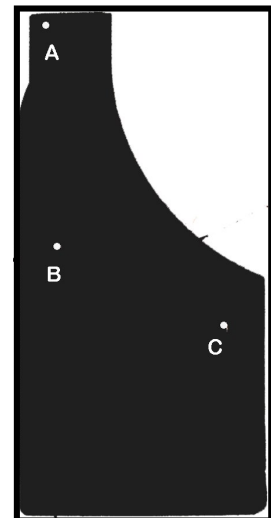
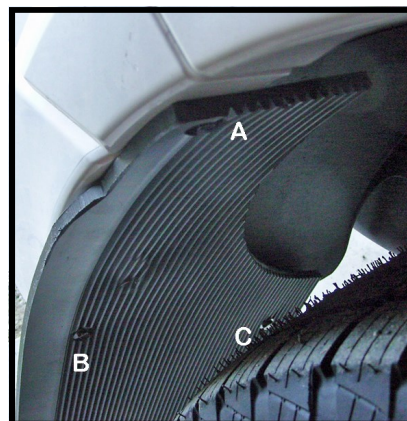
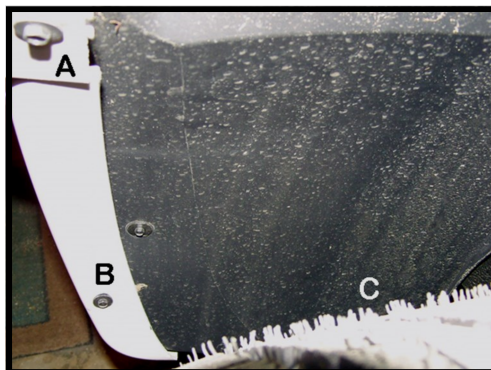
Step 5: Repeat step 4 at hole "B"

Step 6: Slip the bent end of the "FLAT CLIP" over the lower edge of the fender liner and tighten causing the clip to grip the fender liner.

Step 7: Verify that the mud flap is still plumb and centered to the tire, then tighten all the screws and bolts.

Note: Recheck bolts and screws every three months and retighten as necessary

IF YOU HAVE ANY QUESTIONS OR CONCERNS PLEASE GIVE US A CALL AT 541-245-9148



FR12 07 EXD, FR12 11 EXD