



Directions for drill-less installation of 2001—2010 Ford Dually Rear Flaps

Supplied Hardware: 12- 1/4-20 x 1 1/4” Stainless Steel Black Oxide (SSBO) bolts; 12- 1/4” SSBO washers; 12- 1/4-20 anodized u-clips.

NOTE: As you progress with the install, check for squareness and plumbness of the mud flap to the tire.

- Step 1: Un package your new rear mud flaps. Smooth side is rear side, tapered corner on top is outside top edge. If applicable, Stainless Steel weights face rearwards.
- Step 2: Remove the factory plastic push pins from your fender well liner. See Image #1 a & b
- Step 3: Lift the fender liner forward and attach the supplied (black) U-CLIPS to the factory holes that you removed the plastic push pins from. (Image 5 is a typical U-clip installation.)
- Step 4: Return the liner to position and place the mud flap into the fender well and match up the pre-drilled holes in the flap with the factory holes and u-clips in the truck fender.
- Step 7: Insert bolts thru washers, pre-drilled holes in the mud flap, and thread into the U Clips. Tighten bolts slightly. (leave slightly loose to align flaps)
- Step 8: Check the mud flap for vertical alignment and adjust as needed.
- Step 9: Tighten all bolts .

NOTE: Recheck every three months and retighten bolts if necessary.

Add moisture to the mud flaps 2X a year with furniture polish, vinyl treatment or leather treatment.

IF YOU HAVE ANY QUESTIONS OR CONCERNS PLEASE GIVE US A CALL AT 541-245-9148

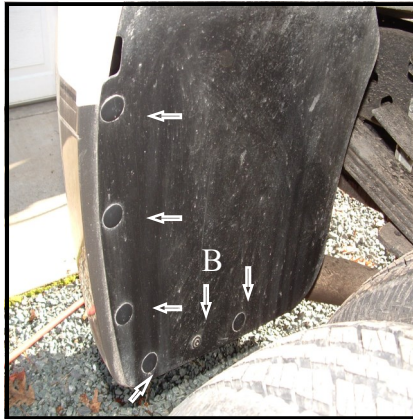


Image #1 a



Image #1 b



Image #2



Image #3



Image 5

